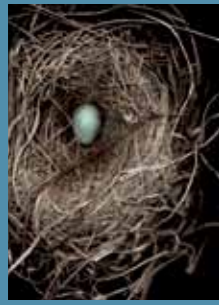




**CONSEQUENCE 2.0**  
Sequel

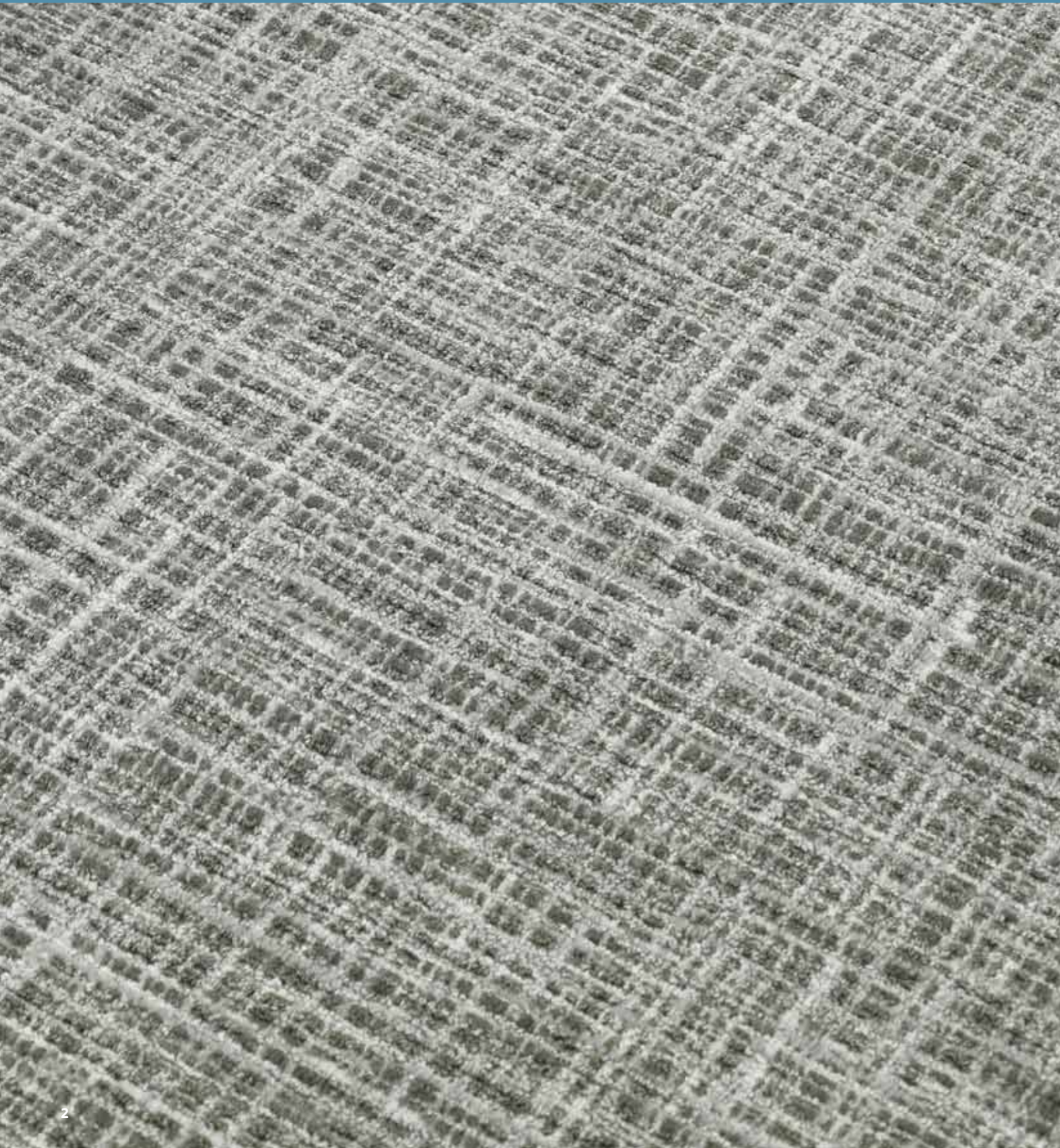
Milliken™





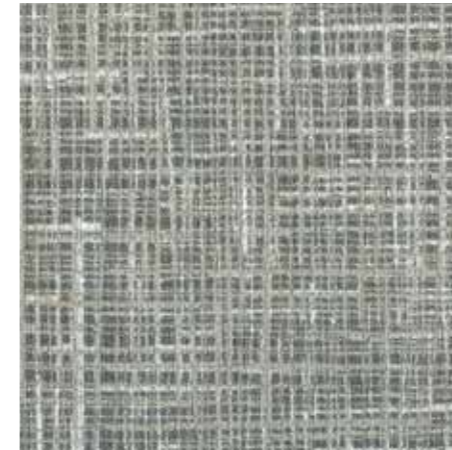
## INSPIRED. INSPIRING.

Any single piece of a bird's nest is weak. But together, they form a constellation of tiny junctures that, as one, can withstand the strongest winds and the heaviest rain. Consequence builds upon a multitude of simple lines to form a design that is textural, dimensional and naturally refined.

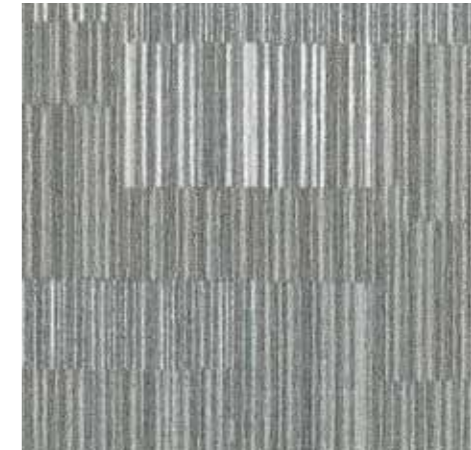


## Consequence Patterns

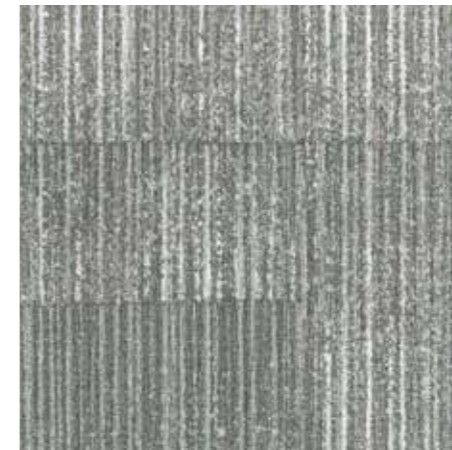
Consequence 2.0 features six coordinating designs. This brochure presents the Sequel design. Upshot, Spin Off, Part Two, React and Effect are presented in separate brochures. The designs below are shown in the Purity colour.



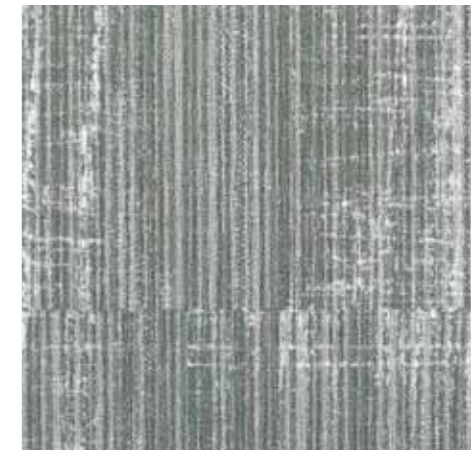
Sequel



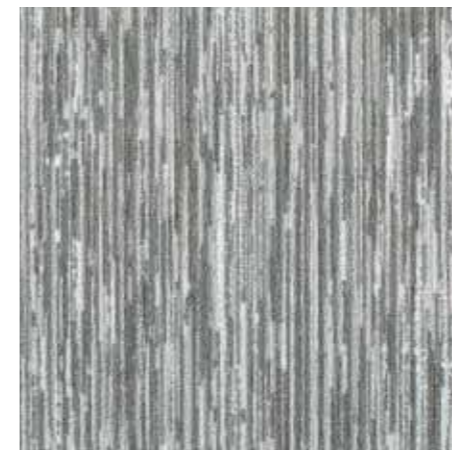
Upshot



Spin Off



Part Two



React

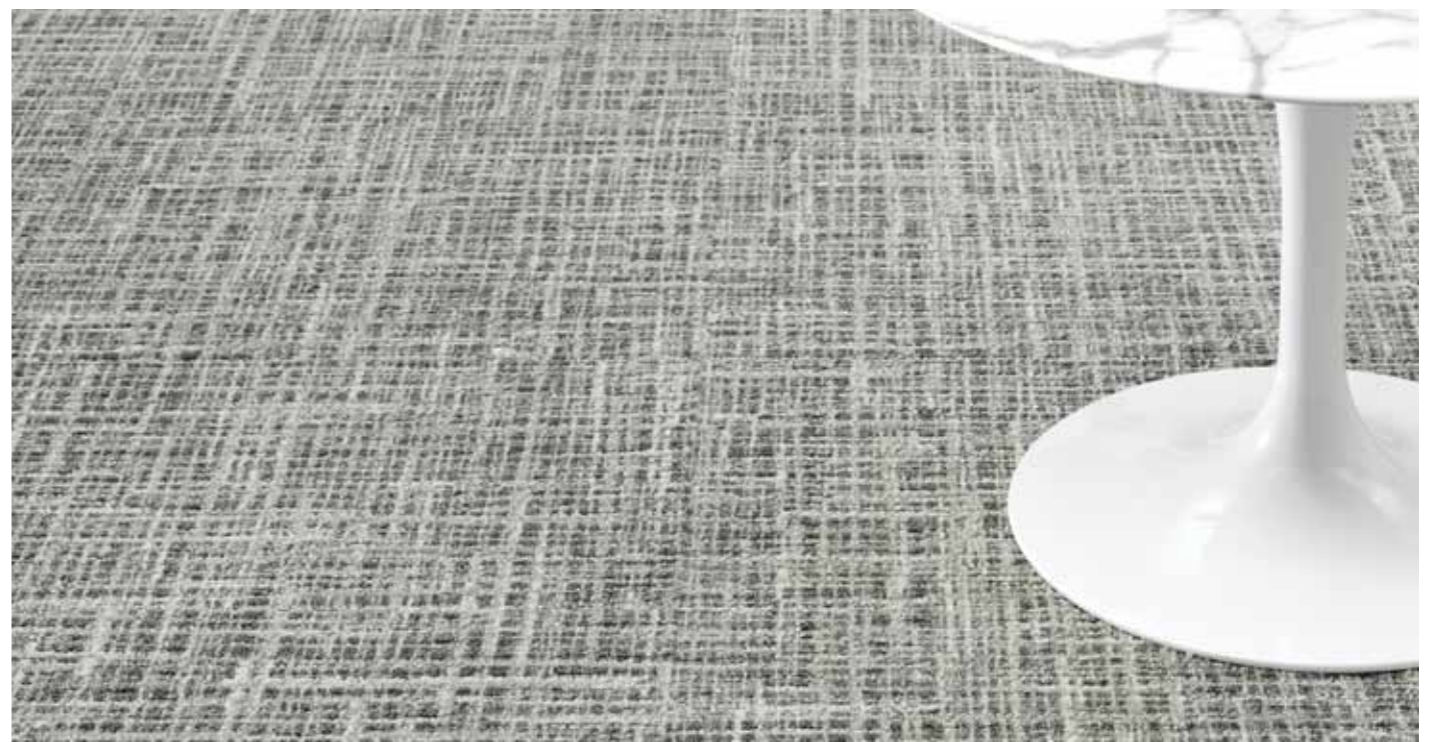


Effect









Colour shown SEQ144-152 - Purity

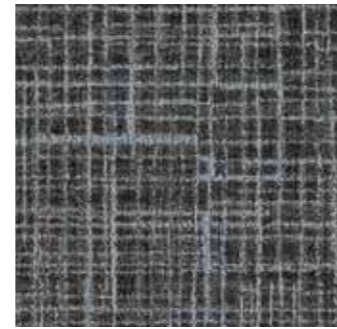




SEQ144-152 Purity



SEQ04-106 Air



SEQ138-27 Jocasta



SEQ48-171 Doe



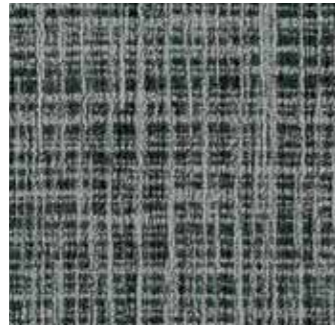
SEQ139-05 Cornsilk



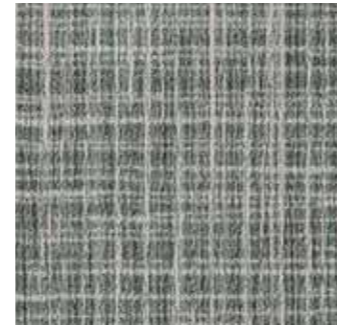
SEQ120-144 Café Au Lait



SEQ121-13 Whimsical



SEQ108-79 Position



SEQ48-152 Down



SEQ04-55 Reflect



SEQ14-87 Flax



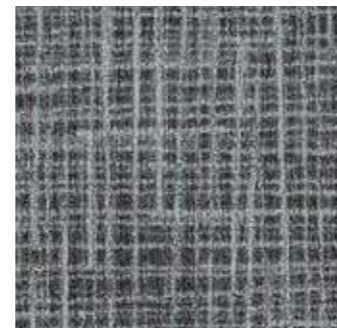
SEQ21-41 Tranquil



SEQ172-154 Solace



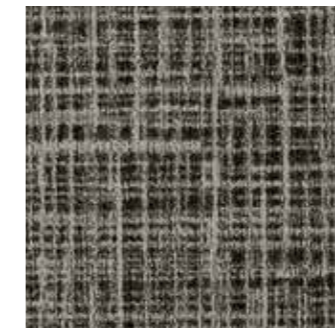
SEQ27-106 Misty



SEQ13-120 Kohl



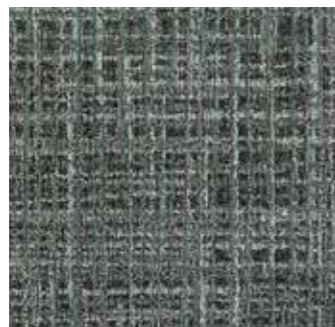
SEQ42-21 Linen



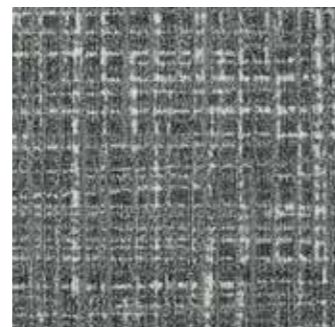
SEQ152-120 Nomad



SEQ18-27 Hopsack



SEQ79-153 Owl



SEQ144-153 Ash



SEQ144-06 Barely There



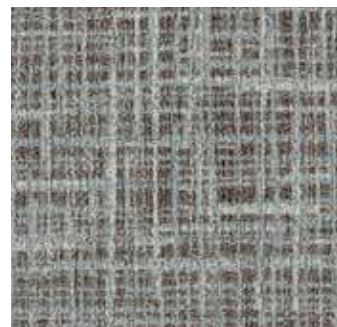
SEQ165-145 Wyn



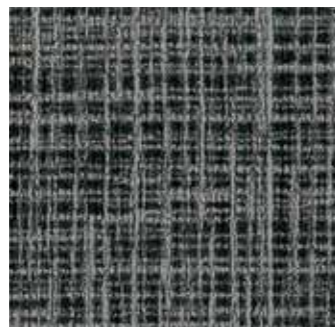
SEQ83-27 Coffee Bean



SEQ27-170 Ianthe



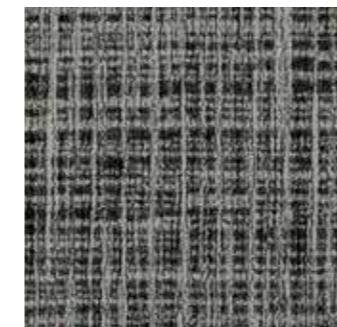
SEQ120-180 Akoya



SEQ05-27 Licorice



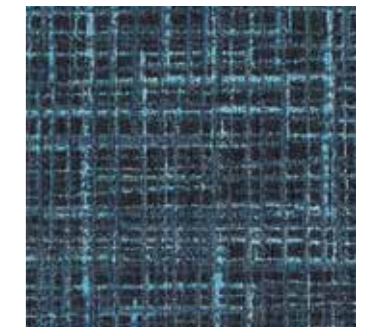
SEQ108-133 Tortoise



SEQ79-124 Timberwolf



SEQ27-59 Nut



SEQ158-52 Harbour

**Quarter tile shown**  
For full technical specification  
see page 10

**Illustration de quarts de dalles**  
Pour les spécifications  
techniques complètes voyez  
page 10

**Viertelfliesen abgebildet**  
Für weitere technische  
Informationen siehe Seite 10

**Muestras de cuartos de loseta**  
Para especificaciones técnicas  
completas vea página 10

**Quarter tile shown**  
For full technical specification  
see page 10

**Illustration de quarts de dalles**  
Pour les spécifications  
techniques complètes voyez  
page 10

**Viertelfliesen abgebildet**  
Für weitere technische  
Informationen siehe Seite 10

**Muestras de cuartos de loseta**  
Para especificaciones técnicas  
completas vea página 10







[www.millikencarpet.com](http://www.millikencarpet.com)

**SAMPLE HOTLINE +44(0)1942 612 803**

**CUSTOMER SERVICE**

T +44 (0)1942 612 777 | [carpetenquiries@milliken.com](mailto:carpetenquiries@milliken.com)  
Beech Hill Plant, Gidlow Lane, Wigan WN6 8RN, England

**LONDON STUDIO**

T +44 (0)20 7336 7290  
5 Berry Street, Clerkenwell, London EC1V 0AA, England